

WHEATLANDS

SCHEDULE 5 - Trees Updated 2/23

PLANT PALETTE

*Note: *=varieties listed may have comparable, related varieties that are also good.*

COMMON NAME

BOTANICAL NAME *

DECIDUOUS SHADE TREES

Western Catalpa
Western Hackberry
Honeylocust

Catalpa speciosa
Celtis occidentalis
Gleditsia triacanthose inermis
'Imperial', 'Shademaster', 'Skyline' *
Gymnocladus dioicus
Quercus bicolor
Quercus macrocarpa
Tilia americana 'American Sentry'*
Tilia cordata 'Greenspire'
Ulmus americana 'Valley Forge',
'Accolade' *

Kentucky Coffee Tree
Swamp White Oak
Bur Oak
American Linden
Greenspire Linden
Elm

ORNAMENTAL TREES

Washington Hawthorn
Crabapple
Japanese Tree Lilac
Ornamental Pear
Serviceberry
Redbud

Crataegus phaenopyrum*
Malus sp.'Prairiefire', 'Spring Snow' *
Syringa reticulata
Pyrus calleryana
Amelanchier sp. 'Shadblow' *
Cercis occidentalis

EVERGREEN TREES

Fat Albert Spruce
Pinon Pine
Limber Pine
Bosnian Pine
Austrian Pine
Ponderosa Pine
Column. Norway Spruce

Picea pungens 'Fat Albert' *
Pinus edulis
Pinus flexilis 'Vanderwolf's Pyramid'
Pinus heldreichii var. leucodermis
Pinus nigra
Pinus ponderosa
Picea abies sp. *

DECIDUOUS SHRUBS

Saskatoon Serviceberry	Amelanchier alnifolia
Crimson Pygmy Barberry	Berberis thunbergii 'Atropupurea Nana'
Butterfly Bush	Buddleia davidii
Blue Mist Spirea	Caryopteris x clandonensis
Mountain Mahogany	Cercocarpus montanus
Red Twig Dogwood	Cornus sericea 'Baileyi'
Rock Cotoneaster	Cotoneaster horizontalis
Dwarf Burning Bush	Euonymus alatus 'Compacta'
Beauty Bush	Kolkwitzia amabilis
Oregon Grape Holly	Mahonia aquifolium
Cheyenne Mockorange	Philadelphus lewisii 'Cheyenne'
Diablo Ninebark	Physocarpus opulifolius 'Diablo'
Dwarf Ninebark	Physocarpus opulifolius 'Nanus'
Abbotswood Potentilla	Potentilla fruticosa 'Abbotswood'
Coronation Triumph Potentilla	Potentilla fruticosa 'Coronation Triumph'
Western Sand Cherry	Prunus besseyi
Three Leaf Sumac	Rhus trilobata
Golden Currant	Ribes aureum
Red Lake Currant	Ribes sativum 'Red Lake'
Flower Carpet Rose	Rosa varieties
Anthony Waterer Spirea	Spiraea japonica 'Anthony Waterer'
Little Princess Spirea	Spiraea japonica 'Little Princess'
Miss Kim Lilac	Syringa patula 'Miss Kim'
Common Lilac	Syringa vulgaris
Korean Spice Viburnum	Viburnum carlesii
Mohican Viburnum	Viburnum lantana 'Mohican'

EVERGREEN SHRUBS

Lena Broom	Cytisus x 'Lena'
Emerald Gaiety Euonymus	Euonymus fortunei 'Emerald Gaiety'
Spartan Juniper	Juniperus chinensis 'Spartan' *
Arcadia Juniper	Juniperus sabina 'Arcadia'
Buffalo Juniper	Juniperus sabina 'Buffalo'
Oregon Grape Holly	Mahonia aquifolium
Globe Dwarf Spruce	Picea pungens 'Globosa'
Mesa Verde Spruce	Picea pungens 'Mesa Verde'
Mops Mugo Pine	Pinus mugo 'Mops' *

Mugo Pine

Pinus mugo mughus

ORNAMENTAL GRASSES

Feather Reed Grass

Calamagrostis acutiflora 'Karl Foerster'

Plume Grass

Erianthus ravennae

Blue Avena Grass

Helictotrichon sempervirens

Maiden Hair Grass

Miscanthus sinensis 'Gracillimus'

Dwarf Maiden Grass (Yaku Jima)

Miscanthus sinensis 'Yaku Jima'

Heavy Metal Switch Grass

Panicum virgatum 'Heavy Metal'

Red Switch Grass

Panicum virgatum 'Shenandoah'

Hardy Fountain Grass

Pennisetum alopecuroides 'Hameln'

Oriental Fountain Grass

Pennisetum orientale

GROUNDCOVERS

Snow-in-Summer

Cerastium tomentosum

Purpleleaf Wintercreeper

Euonymus fortunei 'Coloratus'

Virginia Creeper

Parthenocissus quinquefolia engelmannii

Showy Stonecrop

Sedum spectabile

Hens and Chicks

Sempervirens sp.

Wooly Thyme

Thymus pseudolanuginosus

Periwinkle

Vinca minor

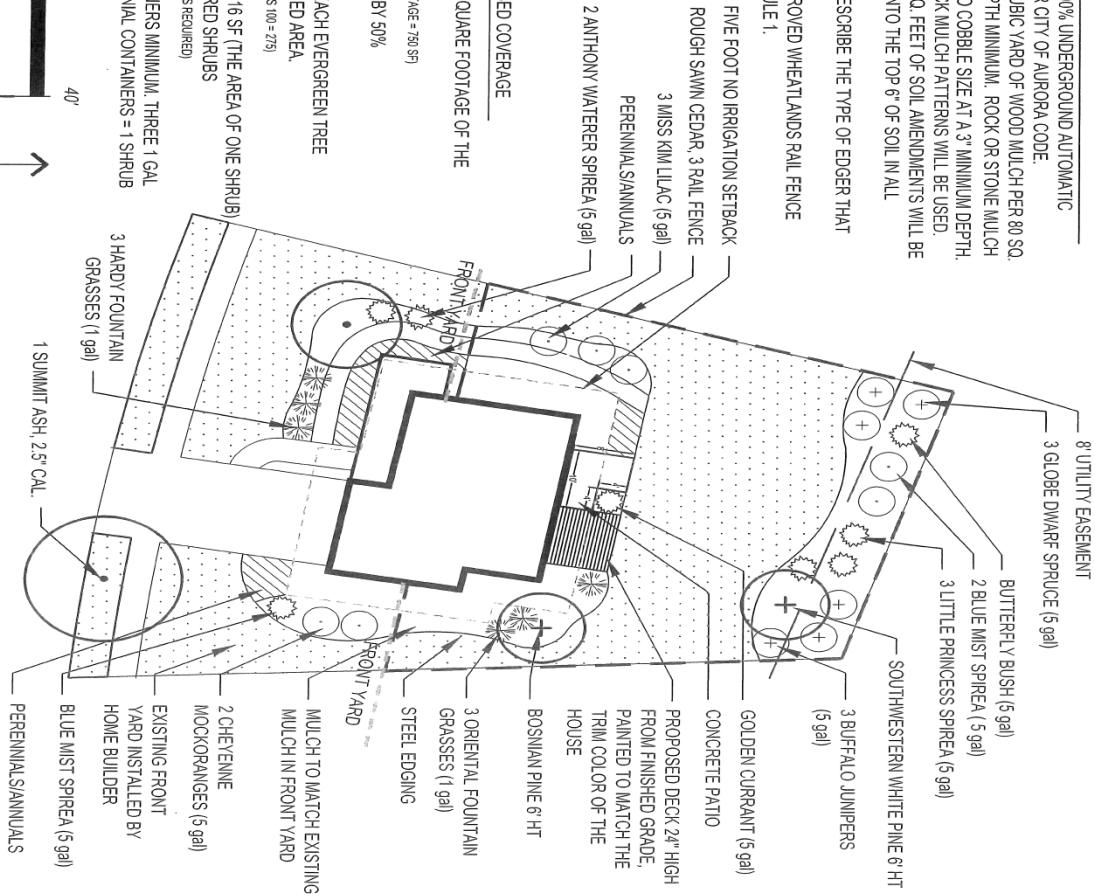
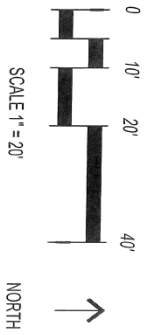
SCHEDULE 6 SAMPLE LANDSCAPE PLAN

NOTES

- 1) WE WILL COMMIT TO A 100% UNDERGROUND AUTOMATIC IRRIGATION SYSTEM PER CITY OF AURORA CODE.
- 2) WE WILL COMMIT TO 1 CUBIC YARD OF WOOD MULCH PER 80 SQ. FEET OF BED AT 4" DEPTH MINIMUM. ROCK OR STONE MULCH SHALL BE 1/2" MINIMUM TO COBBLE SIZE AT A 3" MINIMUM DEPTH. NO HIGH CONTRAST ROCK MULCH PATTERNS WILL BE USED.
- 3) 3 CUBIC YDS. PER 1000 SQ. FEET OF SOIL. AMENDMENTS WILL BE INSTALLED AND TILLED INTO THE TOP 6" OF SOIL IN ALL LANDSCAPE AREAS.
- 3) EDGER SHALL BE(DESCRIBE THE TYPE OF EDGER THAT YOU WILL USE).
- 4) FENCE WILL BE THE APPROVED WHEATLANDS RAIL FENCE REFERENCED IN SCHEDULE 1.

CALCULATIONS FOR 50% BED COVERAGE

- 1) CALCULATE THE TOTAL SQUARE FOOTAGE OF THE BED/MULCH AREA.
(EX. TOTAL BED SQUARE FOOTAGE = 750 SF)
- 2) MULTIPLY THAT NUMBER BY 50%
(750 SF TIMES 50% = 375 SF)
- 3) SUBTRACT 100 S.F. PER EACH EVERGREEN TREE PROPOSED WITHIN THE BED AREA.
(1 EVERGREEN TREE: 375 MINUS 100 = 275)
- 4) DIVIDE THAT NUMBER BY 16 SF (THE AREA OF ONE SHRUB = THE NUMBER OF REQUIRED SHRUBS
(275 DIVIDED BY 16 = 17 SHRUBS REQUIRED)
- 5) SHRUBS = 5 GAL. CONTAINERS MINIMUM. THREE 1 GAL ORNAMENTAL OR PERENNIAL CONTAINERS = 1 SHRUB



WHEATLANDS SAMPLE LANDSCAPE PLAN

*This is just an example. Not all plants listed on this example are on the approved plant list. Please make sure to refer to the approved plant list, when making your plant selection.